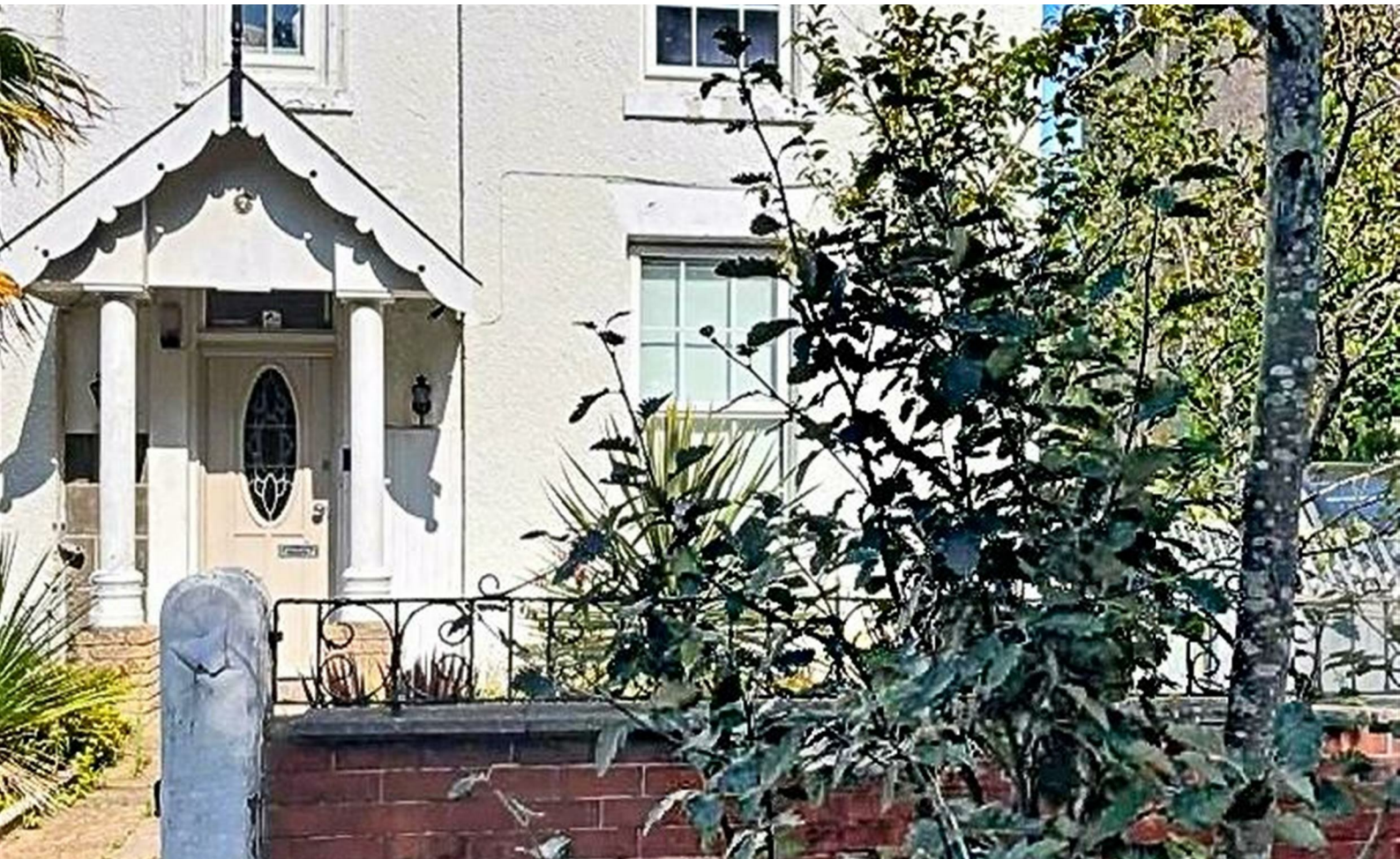




FLEXIAGENT



Aughton Road Southport, PR8 2AF **£1,100 Per Month**

7A Aughton Road, Southport, PR8 2AF

Spacious 2-Bed First Floor Apartment | Character Features | Rear Garden

Flexi-Agent are delighted to bring to the rental market this charming and generously sized two-bedroom first-floor apartment, located on the ever-popular Aughton Road. Positioned within easy reach of local shops, transport links, and the amenities of both Birkdale Village and Southport town centre, this property offers convenience, space, and plenty of character.

The accommodation briefly comprises:

Two double bedrooms

Both rooms are well-proportioned, bright, and full of period charm.

Spacious living room

A warm and inviting space boasting character features and ample room for comfortable furnishings.

Separate dining room

Ideal for meals, entertaining, or as a versatile second reception space.

Viewing

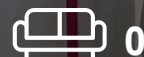
Please contact our Flexi-Agent Southport Lettings Office on 01704 889455 if you wish to arrange a viewing appointment for this property or require further information.



2



1



0



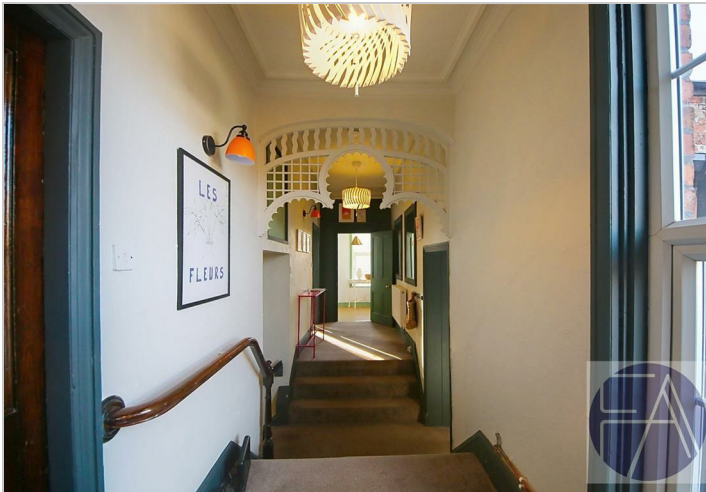
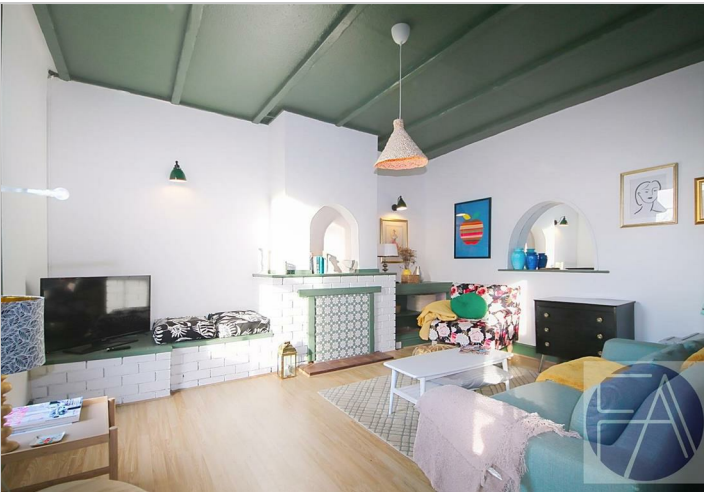
Floor Plan



Area Map



Energy Efficiency Graph



These particulars, whilst believed to be accurate are set out as a general outline only for guidance and do not constitute any part of an offer or contract. Intending purchasers should not rely on them as statements of representation of fact, but must satisfy themselves by inspection or otherwise as to their accuracy. No person in this firms employment has the authority to make or give any representation or warranty in respect of the property.